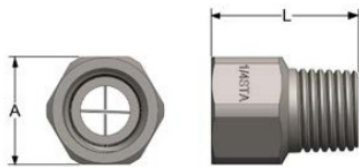
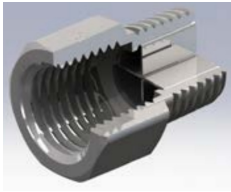


Other Types of Nozzles and Accessories – Accessories



BEX Flow Stabilizers Series „STA“

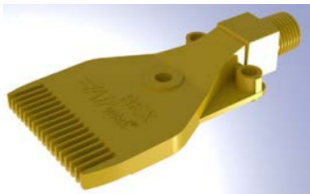
TYPICAL APPLICATIONS:

When liquid in a pipe emerges from elbows or tees, the resulting flow is often distorted. These flow stabilizers help to eliminate flow distortion, resulting in a more even and consistent spray pattern.

CONSTRUCTION:

This unit consists of a body and an internal vane. Available in 1/8", 1/4", 3/8" and 1/2" BSPT sizes, with a male inlet and female outlet connection. Standard materials are brass, 303 and 316 stainless steel.

MODEL	Inlet Thread BSPT	Outlet Thread BSPT	Dim. A (mm)	Dim. L (mm)
1/8STA	1/8 male	1/8 female	15 HEX	22
1/4STA	1/4 male	1/4 female	18 HEX	25
3/8STA	3/8 male	3/8 female	21 HEX	29
1/2STA	1/2 male	1/2 female	25 HEX	35



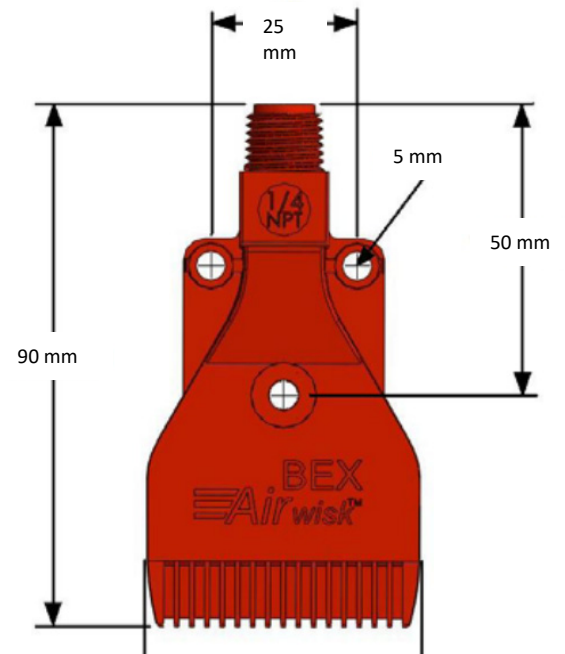
BEX Airwisk Nozzles produce a concentrated flat fan pattern of high impact air for cooling, drying and blow off applications. The Airwisk's design efficiently controls compressed air usage, reduces energy costs and provides optimum air distribution.

CONSTRUCTION:

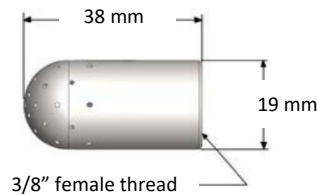
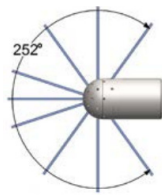
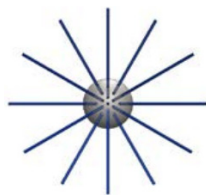
The BEX Airwisk is made of hard-wearing ABS plastic (rated to 65° C) and has a maximum pressure of 7 bar. The Airwisk can be mounted individually or side by side to provide greater coverage.

TYPICAL APPLICATIONS:

- Cooling of Components/Parts
- Cleaning and Drying of Parts
- Air Curtains
- Debris Removal



MODEL	Capacity (L/min)				
	0.7 bar	2 bar	3 bar	4 bar	6 bar
1/4AW15	193.3	359.7	424.7	586.7	816.7



SN4922 Clean in Place Sprühdüsen

CAPACITIES WATER

MODEL	CAPACITY (L/min) AT VARIOUS PRESSURE (bar)							
	0.7 bar	1.5 bar	2 bar	3 bar	4 bar	5 bar	7 bar	10 bar
SN4922	17.55	25.66	29.78	36.32	42.06	46.85	55.69	66.26

CAPACITIES AIR

MODEL	CAPACITY (L/min) AT VARIOUS PRESSURE (bar)				
	0.7 bar	1.5 bar	2 bar	4 bar	6 bar
SN4922	402.1	597.5	773.1	1302.57	1809.45