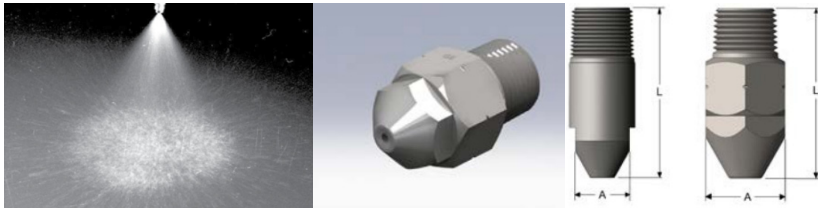


# Threaded Nozzles – Full Cone Series S15 & GS15



## SPRAY CHARACTERISTICS:

With a narrow spray pattern and larger droplet sizes, BEX 30° full cone nozzles have more impact per unit area of spraying surface than wider full cone nozzles.

## CONSTRUCTION:

These nozzles are made with a large free passage internal vane and either a two piece (GS) body or a one piece (S) body. Standard materials are brass, 303SS, and 316SS. Both NPT and BSPT threads are available.

MODEL NUMBER		Thread BSPT	MAX. FREE PASSAGE (mm)	Dimension		CAPACITY (L/min) AT VARIOUS PRESSURES (bar)											Spray Angle @ 3 bar
				"A" (mm)	"L" (mm)	1 bar	1.5 bar	2 bar	3 bar	4 bar	5 bar	7 bar	10 bar	12 bar	15 bar		
female	male																
1/8FGS1507	1/8GS1507	1/8"	0.71	16 Hex	33.4	1.59	1.96	2.23	2.78	3.19	3.58	4.22	5.06	5.54	6.20		15°
1/8FGS1514	1/8GS1514	1/8"	0.91	16 Hex	33.4	3.19	3.92	4.51	5.51	6.38	7.11	8.44	10.0	11.0	12.2		15°
1/4FGS1530	1/4GS1530	1/4"	1.24	17 Hex	36.5	6.83	8.38	9.66	11.8	13.6	15.3	17.9	21.4	23.6	26.4		15°
3/8FGS1550	3/8GS1550	3/8"	1.45	21 Hex	36.5	11.3	14.1	15.9	19.5	22.7	25.3	30.2	36.0	39.5	44.2		15°
1/2FGS1590	1/2GS1590	1/2"	1.70	26 Hex	38.1	20.5	25.0	29.1	35.5	41.0	45.7	54.1	64.7	70.9	79.3		15°
3/4FGS15150	3/4GS15150	3/4"	2.06	54 round	60	34.1	41.9	48.3	59.2	68.3	76.5	90.3	109	118	134		15°
	1S15280	1"	2.90	59 round	59	63.7	77.9	90.2	109	127	141	170	200	220	248		15°
	11/4 S15430	1 1/4"	4.11	89 round	89	97.9	118	136	168	195	220	260	309	338	378		15°
	1 1/2 S15630	1 1/2"	4.90	92 round	92	145	177	205	250	287	320	379	455	497	556		15°
	2S151150	2"	5.84	92 round	92	264	318	369	455	524	586	694	829	908	1014		15°
	21/2S151750	2 1/2"	7.16	127 round	127	400	487	565	692	797	890	1052	1262	1381	1542		15°
	3S152500	3"	8.28	127 round	127	569	697	806	988	1139	1272	1508	1799	1972	2205		15°