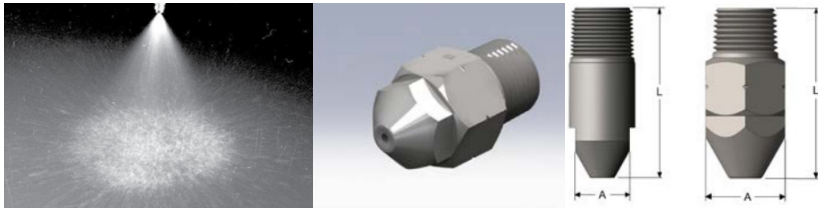


# Threaded Nozzles – Full Cone Series S30 & GS30



## SPRAY CHARACTERISTICS:

With a narrow spray pattern and larger droplet sizes, BEX 30° full cone nozzles have more impact per unit area of spraying surface than wider full cone nozzles.

## CONSTRUCTION:

These nozzles are made with a large free passage internal vane and either a two piece (GS) body or a one piece (S) body. Standard materials are brass, 303SS, and 316SS. Both NPT and BSPT threads are available.

Model Number		Thread BSPT	MAXIMUM FREE PASSAGE (mm)	Dimension		CAPACITY (L/min) AT VARIOUS PRESSURES (bar)											Spray Angle @		
female	male			"A" (mm)	"B" (mm)	1 bar	1.5 bar	2 bar	3 bar	4 bar	5 bar	7 bar	10 bar	12 bar	15 bar	1 bar	3 bar	8 bar	
1/8FGS3001.4	1/8GS3001.4	1/8"	0.71	16 Hex	33	0.32	0.39	0.45	0.55	0.64	0.71	0.84	1.01	1.11	1.24	17°	30°	31°	
1/8FGS3002.5	1/8GS3002.5	1/8"	0.91	16 Hex	33	0.57	0.70	0.81	0.99	1.14	1.27	1.51	1.80	1.97	2.21	26°	30°	32°	
1/8FGS3004	1/8GS3004	1/8"	1.24	16 Hex	37	0.91	1.12	1.29	1.58	1.82	2.04	2.51	2.88	3.16	3.50	23°	30°	32°	
1/8FGS3007	1/8GS3007	1/8"	1.45	16 Hex	37	1.60	1.95	2.26	2.76	3.20	3.60	4.20	5.00	5.50	6.20	23°	30°	30°	
1/4FGS3009	1/4GS3009	1/4"	1.70	17 Hex	38	2.05	2.51	2.90	3.60	4.10	4.60	5.40	6.50	7.10	7.90	26°	30°	30°	
3/8FGS3014	3/8GS3014	3/8"	2.06	21 Hex	54	3.20	3.90	4.51	5.50	6.40	7.10	8.40	10.1	11.1	12.4	31°	30°	31°	
1/2FGS3030	1/2GS3030	1/2"	2.90	26 Hex	59	6.80	8.4	9.70	11.8	13.7	15.3	18.1	21.6	23.7	26.5	26°	30°	31°	
3/4FGS3050	3/4GS3050	3/4"	4.11	35 Hex	89	11.4	14.0	16.1	19.7	22.8	25.5	30.2	36.0	39.0	44.0	27°	30°	31°	
	1S3070	1"	4.90	35	92	15.6	20.0	22.6	27.6	32.0	36.0	42.0	50.0	55.0	62.0	27°	30°	30°	
	1S30100	1"	5.84	35	92	22.8	27.9	32.0	40.0	46.0	51.0	60.0	72.0	79.0	88.0	27°	30°	30°	
	1 1/4 FS30150	1 1/4"	7.16	45	127	34.0	42.0	48.0	59.0	68.0	76.0	90.0	108	118	132	27°	30°	30°	
	1 1/4 FS30200	1 1/4"	8.28	45	127	45.0	56.0	64.0	79.0	91.0	102	121	144	158	177	27°	30°	30°	
	1 1/2 FS30250	1 1/2"	9.14	51	156	57.0	70.0	81.0	99.0	114	127	151	180	197	221	27°	30°	30°	
	1 1/2 FS30300	1 1/2"	10.3	51	156	68.0	83.0	97	118	137	153	181	216	237	265	28°	30°	30°	
	2S30350	2"	10.9	61	200	79.0	98.0	113	138	160	178	211	252	276	309	28°	30°	30°	
	2S30400	2"	11.7	61	200	91.0	112	129	158	182	204	241	288	316	353	28°	30°	30°	
	2S30500	2"	12.7	61	200	113	140	161	197	228	255	301	360	395	441	28°	30°	30°	
	2 1/2 FS30600	2 1/2"	14.2	76	264	137	167	193	237	273	306	362	432	474	530	28°	30°	30°	
	2 1/2 FS30700	2 1/2"	15.2	76	264	160	195	226	276	319	357	422	504	553	618	28°	30°	30°	
	2 1/2 FS301000	2 1/2"	18.5	76	264	228	279	322	395	456	510	603	721	789	883	28°	30°	30°	
	2 1/2 FS301100	2 1/2"	19.3	76	264	251	307	355	434	501	561	663	793	868	971	28°	30°	30°	
	2 1/2 FS301200	2 1/2"	20.3	76	264	274	335	387	474	547	611	724	865	947	1059	28°	30°	30°	