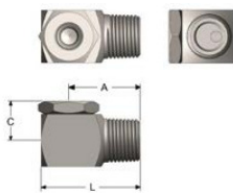
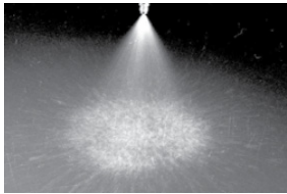


Threaded Nozzles – Full Cone Series HNS



MODEL NUMBER female (BSPT)	Dim. A (mm)	Dim. B (mm)	Dim. L (mm)	MODEL NUMBER male (BSPT)	Dim. A (mm)	Dim. C (mm)	Dim. L (mm)
1/4FHNS	24	13	31	1/4HNS	24	13	31
3/8FHNS	25	14	36	3/8HNS	27	16	38
1/2FHNS	36	19	48	1/2HNS	36	19	48

SPRAY CHARACTERISTICS:

The HNS series vaneless full-cone nozzle projects a medium to coarse full-cone spray in a direction perpendicular to the nozzle inlet axis. The maximum free passage in this nozzle is substantially larger than most fullcone nozzles due to the 'vaneless' design. This nozzle is suitable for applications where a relatively coarse full-cone spray is required, and where standard nozzles are subject to plugging.

CONSTRUCTION:

The HNS series are made from bar stock and are a two piece construction. Standard materials are brass, 303 stainless steel and 316 stainless steel. Other materials are available upon request

SPECIAL FEATURES:

- 'Vaneless' full-cone design
- Large maximum free passage
- Easy disassembly/assembly and cleaning

TYPICAL APPLICATIONS:

Wherever a medium to coarse full-cone spray is required from a nozzle with a larger maximum free passage

MODEL NUMBER		Thread BSPT	MAX. FREE PASSAGE (mm)	CAPACITY (L/min) AT VARIOUS PRESSURES (bar)										
female	male			0.3 bar	0.5 bar	0.7 bar	1 bar	1.5 bar	2 bar	3 bar	4 bar	5 bar	6 bar	7 bar
1/4FHNS5	1/4HNS5	1/4"	1.98	1.25	1.61	1.91	2.28	2.79	3.20	3.90	4.60	5.10	5.60	6.00
1/4FHNS7	1/4HNS7	1/4"	2.39	1.75	2.26	2.67	3.20	3.90	4.50	5.50	6.40	7.10	7.80	8.40
1/4FHNS8	1/4HNS8	1/4"	2.77	2.00	2.58	3.05	3.60	4.50	5.20	6.30	7.30	8.20	8.90	9.60
1/4FHNS10	1/4HNS10	1/4"	3.18	2.50	3.20	3.80	4.60	5.60	6.40	7.90	9.10	10.2	11.2	12.1
1/4FHNS11	1/4HNS11	1/4"	3.58	2.75	3.50	4.20	5.00	6.10	7.10	8.70	10.0	11.2	12.3	13.3
3/8FHNS11	3/8HNS11	3/8"	3.18	2.75	3.50	4.20	5.00	6.10	7.10	8.70	10.0	11.2	12.3	13.3
3/8FHNS13	3/8HNS13	3/8"	3.58	3.20	4.20	5.00	5.90	7.30	8.40	10.3	11.9	13.2	14.5	15.7
3/8FHNS16	3/8HNS16	3/8"	3.96	4.00	5.20	6.10	7.30	8.90	10.3	12.6	14.6	16.3	17.9	19.3
3/8FHNS20	3/8HNS20	3/8"	4.37	5.00	6.40	7.60	9.10	11.2	12.9	15.8	18.2	20.4	22.3	24.1
3/8FHNS23	3/8HNS23	3/8"	4.78	5.70	7.40	8.80	10.5	12.8	14.8	18.2	21.0	23.4	25.7	27.7
3/8FHNS26	3/8HNS26	3/8"	5.16	6.50	8.40	9.90	11.9	14.5	16.8	20.5	23.7	26.5	29.0	31.0
3/8FHNS29	3/8HNS29	3/8"	5.56	7.20	9.30	11.1	13.2	16.2	18.7	22.9	26.4	29.6	32.0	35.0
3/8FHNS33	3/8HNS33	3/8"	5.94	8.20	10.6	12.6	15.0	18.4	21.3	26.1	30.1	34.0	37.0	40.0
1/2FHNS32	1/2HNS32	1/2"	5.16	8.00	10.3	12.2	14.6	17.9	20.6	25.3	29.2	33.0	36.0	39.0
1/2FHNS40	1/2HNS40	1/2"	5.94	10.0	12.9	15.3	18.2	22.3	25.8	32.0	36.0	41.0	45.0	48.0
1/2FHNS48	1/2HNS48	1/2"	7.14	12.0	15.5	18.3	21.9	26.8	30.9	38.0	44.0	49.0	54.0	58.0
1/2FHNS56	1/2HNS56	1/2"	7.54	14.0	18.0	21.4	25.5	31.3	36.0	44.0	51.0	57.0	63.0	68.0
1/2FHNS64	1/2HNS64	1/2"	8.33	16.0	20.6	24.4	29.2	36.0	41.0	51.0	58.0	65.0	71.0	77.0
1/2FHNS72	1/2HNS72	1/2"	9.12	18.0	23.2	27.5	33.0	40.0	46.0	57.0	66.0	73.0	80.0	87.0