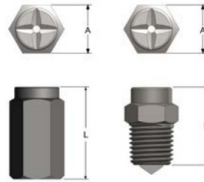
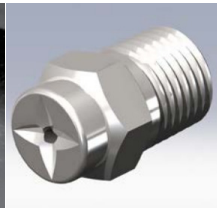
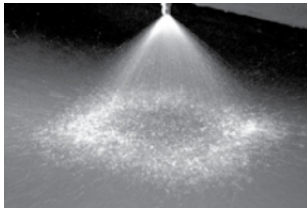


Threaded Nozzles – Full Cone Series SQ



| Model | Dim. A (mm) | Dim. L (mm) |
|----------|-------------|-------------|
| 1/8SQ | 11 HEX | 21 |
| 1/4SQ | 14 HEX | 24 |
| 3/8SQ | 17 HEX | 29 |
| 1/2SQ | 22 HEX | 33 |
| 3/4SQ | 27 HEX | 52 |
| 1FSQ | 38 dia. | 67 |
| 1 1/4FSQ | 48 dia. | 89 |
| 1 1/2FSQ | 57 dia. | 108 |
| 2FSQ | 70 dia. | 138 |
| 2 1/2FSQ | 89 dia. | 175 |

SPRAY CHARACTERISTICS:

Full cone spray pattern, with uniform distribution throughout the approximately square cone.

TYPICAL APPLICATIONS:

- Chemical Processing
- Cooling Sprays
- Continuous Casting

CONSTRUCTION:

Standard materials are brass, 303 and 316 stainless. Larger sizes in cast 316 or 303 stainless bar. Some models are also stocked in plastics and other materials. Please see page 30 for molded plastic models.

| "SQ" one piece body | | Thread BSPT | MAXIMUM FREE PASSAGE (mm) | CAPACITY (L/min) AT VARIOUS PRESSURES (bar) | | | | | | | | | | | Spray Angle @ | | |
|---------------------|--------------|-------------|---------------------------|---|---------|---------|-------|---------|-------|-------|-------|-------|-------|-------|---------------|---------|-------|
| Female | Male | | | 0.3 bar | 0.5 bar | 0.7 bar | 1 bar | 1.5 bar | 2 bar | 3 bar | 4 bar | 5 bar | 6 bar | 8 bar | 0.5 bar | 1.5 bar | 5 bar |
| | 1/8 S3.6SQ | 1/8" | 1.45 | -- | 1.16 | 1.37 | 1.64 | 2.01 | 2.32 | 2.84 | 3.30 | 3.70 | 4.00 | 4.60 | 42° | 55° | 50° |
| | 1/8 S4.8SQ | 1/8" | 1.63 | -- | 1.55 | 1.83 | 2.19 | 2.68 | 3.09 | 3.80 | 4.40 | 4.90 | 5.40 | 6.20 | 50° | 65° | 60° |
| | 1/8 S6SQ | 1/8" | 2.06 | -- | 1.93 | 2.29 | 2.73 | 3.30 | 3.90 | 4.70 | 5.50 | 6.10 | 6.70 | 7.70 | 30° | 65° | 60° |
| | 1/4 S6SQ | 1/4" | 2.06 | 1.50 | 1.93 | 2.29 | 2.73 | 3.30 | 3.90 | 4.70 | 5.50 | 6.10 | 6.70 | 7.70 | 60° | 65° | 60° |
| | 1/4 S10SQ | 1/4" | 2.31 | 2.50 | 3.20 | 3.80 | 4.60 | 5.60 | 6.40 | 7.90 | 9.10 | 10.2 | 11.2 | 12.9 | 61° | 67° | 60° |
| | 1/4 S12SQ | 1/4" | 2.31 | 3.00 | 3.90 | 4.60 | 5.50 | 6.70 | 7.70 | 9.50 | 10.9 | 12.2 | 13.4 | 15.5 | 71° | 76° | 69° |
| | 1/4 S14SQ | 1/4" | 2.31 | 3.50 | 4.50 | 5.30 | 6.40 | 7.80 | 9.00 | 11.1 | 12.8 | 14.3 | 15.6 | 18.0 | 78° | 85° | 75° |
| | 3/8 S18SQ | 3/8" | 2.59 | 4.50 | 5.80 | 6.90 | 8.20 | 10.0 | 11.6 | 14.2 | 16.4 | 18.3 | 20.1 | 23.2 | 70° | 75° | 68° |
| | 1/2 S29SQ | 1/2" | 3.66 | 7.20 | 9.30 | 11.1 | 13.2 | 16.2 | 18.7 | 22.9 | 26.4 | 29.6 | 32.0 | 37.0 | 70° | 75° | 68° |
| | 1/2 S36SQ | 1/2" | 3.66 | 9.00 | 11.6 | 13.7 | 16.4 | 20.1 | 23.2 | 28.4 | 33.0 | 37.0 | 40.0 | 46.0 | 80° | 85° | 77° |
| | 3/4 S50SQ | 3/4" | 4.95 | 12.5 | 16.1 | 19.1 | 22.8 | 27.9 | 32.0 | 39.0 | 46.0 | 51.0 | 56.0 | 64.0 | 70° | 75° | 68° |
| | 1FS106SQ | 1" | 5.56 | 26.5 | 34.0 | 40.0 | 48.0 | 59.0 | 68.0 | 84.0 | 97.0 | 108 | 118 | 137 | 77° | 80° | 72° |
| | 1 1/4FS177SQ | 1 1/4" | 6.60 | 44.0 | 57.0 | 67.0 | 81.0 | 99.0 | 114 | 140 | 161 | 180 | 198 | 228 | 77° | 80° | 72° |
| | 1 1/2FS230SQ | 1 1/2" | 9.96 | 57.0 | 74.0 | 88.0 | 105 | 128 | 148 | 182 | 210 | 234 | 257 | 296 | 74° | 79° | 72° |
| | 2FS290SQ | 2" | 11.1 | 72.0 | 93.0 | 111 | 132 | 162 | 187 | 229 | 264 | 296 | 324 | 374 | 65° | 70° | 65° |
| | 2FS360SQ | 2" | 11.1 | 90.0 | 116 | 137 | 164 | 201 | 232 | 284 | 328 | 367 | 402 | 464 | 70° | 75° | 70° |
| | 2FS480SQ | 2" | 11.1 | 120 | 155 | 183 | 219 | 268 | 309 | 379 | 438 | 489 | 536 | 619 | 78° | 80° | 76° |
| | 2 1/2FS590SQ | 2 1/2" | 13.5 | 147 | 190 | 225 | 269 | 329 | 380 | 466 | 538 | 601 | 659 | 761 | 75° | 80° | 73° |