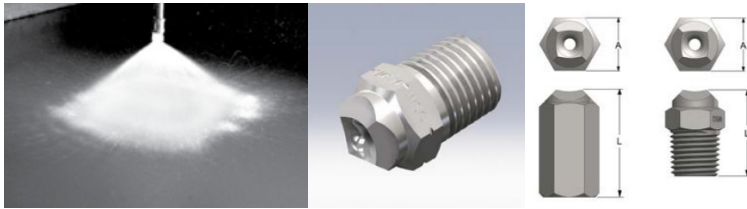


# Threaded Nozzles – Full Cone Series SWSQ



Thread (BSPT)	Dim. A (mm)	Dim. L (mm)
1/4SWSQ	14 HEX	24
3/8SWSQ	17 HEX	30
1/2SWSQ	22 HEX	37
3/4FSWSQ	32 HEX	56
3/4SWSQ	27 HEX	43
1FSWSQ	38 HEX	67
1SWSQ	35 HEX	52
1 1/4FSWSQ	48 dia.	95
1 1/2FSWSQ	57 dia.	108
2FSWSQ	70 dia.	149
2 1/2FSWSQ	92 dia.	165
3FSWSQ	102 dia.	197

## SPRAY CHARACTERISTICS:

Full cone wide angle spray pattern, with uniform distribution through the approximately square cone.

## TYPICAL APPLICATIONS:

- Chemical Processing
- Cooling Sprays
- Continuous Casting

## CONSTRUCTION:

Standard materials are brass, 303 and 316 stainless steel.

Some models are also stocked in other materials.

See page 38 for PSWSQ plastic wide angle full square nozzles in larger capacities..

"SWSQ" one piece body		Thread BSPT	MAXIMUM FREE PASSAGE (mm)	CAPACITY (L/min) AT VARIOUS PRESSURES (bar)											Spray Angle @		
Female	Male			0.3 bar	0.5 bar	0.7 bar	1 bar	1.5 bar	2 bar	3 bar	4 bar	5 bar	6 bar	8 bar	0.5 bar	1.5 bar	5 bar
	1/4 S14WSQ	1/4"	2.31	3.50	4.50	5.30	6.40	7.80	9.00	11.1	12.8	14.3	15.6	18.0	99°	95°	84°
	3/8 S17WSQ	3/8"	2.59	4.20	5.50	6.50	7.70	9.50	11.0	13.4	15.5	17.3	19.0	21.9	98°	94°	82°
	3/8 S20WSQ	3/8"	2.59	5.00	6.40	7.60	9.10	11.2	12.9	15.8	18.2	20.4	22.3	25.8	102°	102°	86°
	3/8 S24WSQ	3/8"	2.59	6.00	7.70	9.20	10.9	13.4	15.5	18.9	21.9	24.5	26.8	30.9	104°	102°	86°
	3/8 S27WSQ	3/8"	2.59	6.70	8.70	10.3	12.3	15.1	17.4	21.3	24.6	27.5	30.1	35.0	104°	102°	87°
	1/2 S30WSQ	1/2"	3.66	7.50	9.70	11.4	13.7	16.7	19.3	23.7	27.3	30.6	33.0	39.0	100°	96°	85°
	1/2 S35WSQ	1/2"	3.66	8.70	11.3	13.3	16.0	19.5	22.6	27.6	32	36.0	39.0	45.0	104°	99°	88°
	1/2 S40WSQ	1/2"	4.11	10.0	12.9	15.3	18.2	22.3	25.8	32.0	36.0	41.0	45.0	52.0	106°	104°	90°
	1/2 S45WSQ	1/2"	4.11	11.2	14.5	17.2	20.5	25.1	29.0	36.0	41.0	46.0	50.0	58.0	106°	104°	94°
3/4 FS50WSQ	3/4 S50WSQ	3/4"	4.95	12.5	16.1	19.1	22.8	27.9	32.0	39.0	46.0	51.0	56.0	64.0	108°	102°	97°
3/4 FS71WSQ	3/4 S71WSQ	3/4"	4.95	17.7	22.9	27.1	32.0	40.0	46.0	56.0	65.0	72.0	79.0	92.0	99°	102°	93°
1FS130WSQ	1S130WSQ	1"	5.56	32.0	42.0	50.0	59.0	73.0	84.0	103	119	132	145	168	102°	107°	99°
1 1/4FS190WSQ		1 1/4"	6.6	47.0	61.0	72.0	87.0	106	122	150	173	194	212	245	104°	105°	102°
1 1/2FS290WSQ		1 1/2"	8.36	72.0	93.0	111	132	162	187	229	264	296	324	374	107°	107°	102°
2FS560WSQ		2"	11.1	140	180	214	255	313	361	442	510	571	625	722	107°	107°	99°
2 1/2FS830WSQ		2 1/2"	13.5	207	267	317	378	463	535	655	757	846	927	1070	104°	105°	102°
3FS1070WSQ		3"	17.5	267	345	408	488	597	690	845	975	1090	1195	1379	107°	105°	105°