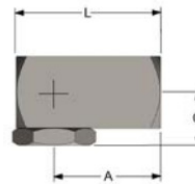
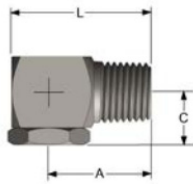
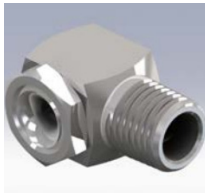
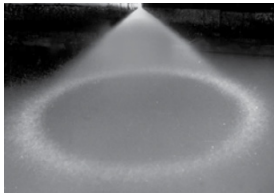


# Threaded Nozzles – Hollow Cone Series HW



Model male	Dim. A (mm)	Dim. L (mm)	Dim. C (mm)	Model female	Dim. A (mm)	Dim. L (mm)	Dim. C (mm)
1/8HW	18	25	10	1/8FHW	18	25	10
1/4HW	24	25	13	1/4FHW	24	25	13
3/8HW	25	35	14	3/8FHW	25	35	14
1/2HW	35	48	19	1/2FHW	35	48	19
3/4HW	40	57	22	3/4FHW	40	57	22

## SPRAY CHARACTERISTICS:

A hollow cone spray pattern, emerging at right angles to the centerline of the pipe connection. The standard included angle of the spray cone is 120° at 0.7 bar. At low pressures hollow cone nozzles produce medium size, uniform droplets. At higher pressures finer droplets are produced.

## CONSTRUCTION:

The models listed are machined from bar stock, and are two piece construction. Standard materials are brass, 303 stainless steel and 316 stainless steel. Some models available in other materials.

## TYPICAL APPLICATIONS:

- Air and Gas Washing
- Aerating, Rinsing and Humidifying
- Industrial Washers and Spray Ponds
- Cooling Tunnels
- Roof Cooling
- Degreasing
- Dust Suppression
- Metal Treatment

Model Number		Thread BSPT	MAX. FREE PASSAGE (mm)	CAPACITY (L/min) AT VARIOUS PRESSURES (bar)												Spray Angle @			
female	female			0.3 bar	0.5 bar	0.7 bar	1 bar	1.5 bar	2 bar	3 bar	4 bar	5 bar	6 bar	8 bar	0.7 bar	1.5 bar	3 bar	6 bar	
1/8FH1W	1/8H1W	1/8"	1.40	--	--	--	0.46	0.56	0.64	0.79	0.91	1.02	1.12	1.29	--	115°	107°	95°	
1/8FH2W	1/8H2W	1/8"	1.96	--	0.64	0.76	0.91	1.12	1.29	1.58	1.82	2.04	2.23	2.58	120°	117°	105°	97°	
1/8FH3W	1/8H3W	1/8"	2.36	--	0.97	1.14	1.37	1.67	1.93	2.37	2.73	3.06	3.30	3.90	120°	116°	109°	92°	
1/8FH5W	1/8H5W	1/8"	2.77	--	1.61	1.91	2.28	2.79	3.20	3.90	4.6	5.10	5.60	6.40	120°	116°	107°	90°	
1/4FH1W	1/4H1W	1/4"	1.40	--	0.32	0.38	0.46	0.56	0.64	0.79	0.91	1.02	1.12	1.29	120°	110°	102°	90°	
1/4FH2W	1/4H2W	1/4"	1.96	--	0.64	0.76	0.91	1.12	1.29	1.58	1.82	2.04	2.23	2.58	120°	110°	105°	92°	
1/4FH3W	1/4H3W	1/4"	2.36	--	0.97	1.14	1.37	1.67	1.93	2.37	2.73	3.06	3.30	3.90	120°	114°	104°	90°	
1/4FH5W	1/4H5W	1/4"	2.77	--	1.61	1.91	2.28	2.79	3.20	3.90	4.60	5.10	5.60	6.40	120°	113°	107°	98°	
1/4FH7.5W	1/4H7.5W	1/4"	4.01	1.87	2.42	2.86	3.40	4.20	4.80	5.90	6.80	7.60	8.40	9.70	120°	115°	110°	92°	
1/4FH10W	1/4H10W	1/4"	4.32	2.50	3.20	3.8.0	4.60	5.60	6.40	7.90	9.10	10.2	11.2	12.9	120°	115°	110°	93°	
1/4FH12.5W	1/4H12.5W	1/4"	4.78	3.12	4.00	4.8.0	5.70	7.00	8.10	9.90	11.4	12.7	14.0	16.1	120°	118°	110°	94°	
1/4FH15W	1/4H15W	1/4"	5.11	3.70	4.80	5.7.0	6.8.0	8.40	9.70	11.8	13.7	15.3	16.7	19.3	120°	115°	108°	92°	
3/8FH5W	3/8H5W	3/8"	2.77	1.25	1.61	1.91	2.28	2.79	3.20	3.90	4.60	5.10	5.60	6.40	120°	117°	107°	99°	
3/8FH7.5W	3/8H7.5W	3/8"	4.01	1.87	2.42	2.86	3.40	4.20	4.80	5.90	6.80	7.60	8.40	9.70	120°	113°	110°	93°	
3/8FH10W	3/8H10W	3/8"	4.32	2.50	3.20	3.80	4.60	5.60	6.40	7.90	9.10	10.2	11.2	12.9	120°	115°	110°	93°	
3/8FH12.5W	3/8H12.5W	3/8"	4.78	3.12	4.00	4.80	5.70	7.00	8.10	9.90	11.4	12.7	14.0	16.1	120°	115°	108°	94°	
3/8FH15W	3/8H15W	3/8"	5.11	3.70	4.80	5.70	6.80	8.40	9.70	11.8	13.7	15.3	16.7	19.3	120°	110°	105°	90°	
3/8FH20W	3/8H20W	3/8"	5.94	5.00	6.40	7.60	9.00	11.2	12.9	15.8	18.2	20.4	22.3	25.8	120°	118°	116°	110°	
3/8FH25W	3/8H25W	3/8"	6.73	6.20	8.10	9.50	11.4	14.0	16.1	19.7	22.8	25.5	27.9	32.0	120°	117°	115°	110°	
3/8FH30W	3/8H30W	3/8"	7.11	7.50	9.70	11.4	13.7	16.7	19.3	23.7	27.3	30.6	33.0	39.0	120°	115°	110°	102°	
1/2FH50W	1/2H50W	1/2"	9.09	12.5	16.1	19.1	22.8	27.9	32.0	39.0	46.0	51.0	56.0	64.0	120°	115°	108°	103°	