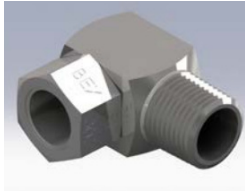


# Threaded Nozzles – Hollow Cone Series PH



## SPRAY CHARACTERISTICS:

A hollow cone spray pattern for phosphating applications. This large droplet, low impingement type of spray results in a tighter and more consistent phosphate crystalline structure.

## TYPICAL APPLICATIONS:

- Phosphating

## CONSTRUCTION:

Two piece construction. Available in 303 stainless steel and 316 stainless steel.

Model Number	Thread BSPT	ORIFICE DIAMETER (mm)		CAPACITY (L/min) AT VARIOUS PRESSURES (bar)										Spray Angle @		
		body	cap	0.3 bar	0.5 bar	0.7 bar	1 bar	1.5 bar	2 bar	3 bar	4 bar	5 bar	6 bar	0.7 bar	1 bar	2 bar
<sup>3</sup> / <sub>8</sub> PH23	3/8"	5.59	7.92	5.70	7.40	8.80	10.5	12.8	14.8	18.2	21.0	23.4	25.7	45°	53°	60°
<sup>3</sup> / <sub>8</sub> PH28	3/8"	5.87	7.92	7.00	9.00	10.7	12.8	15.6	18.0	22.1	25.5	28.5	31	40°	43°	48°
<sup>3</sup> / <sub>8</sub> PH51	3/8"	8.74	9.53	12.5	16.1	19.1	22.8	27.9	32.0	39.0	46.0	51.0	56.0	40°	50°	50°
<sup>3</sup> / <sub>8</sub> PH53	3/8"	9.53	9.53	12.5	16.1	19.1	22.8	27.9	32.0	39.0	46.0	51.0	56.0	70°	70°	70°