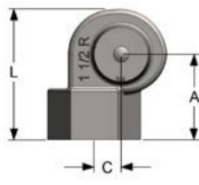
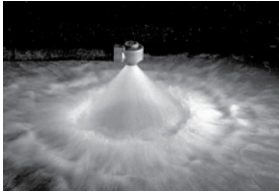


Threaded Nozzles – Hollow Cone Series R



Model	Dim. A (mm)	Dim. B (mm)	Dim. C (mm)	Dim. D (mm)	Dim. L (mm)
1R	51	51	3.2	29	70
11/4R	51	57	12.7	32	79
11/2R	60	76	14.3	45	95
2R	70	98	25.4	57	121
21/2R	89	121	28.6	70	134

SPRAY CHARACTERISTICS:

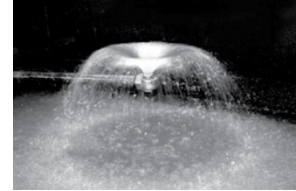
A high capacity hollow cone spray pattern with uniform distribution. The large body and orifice diameters minimize clogging.

CONSTRUCTION:

One piece cast construction. Standard material is 316 stainless steel. All the R series nozzles have a female BSPT pipe connection. Bronze and cast iron available on a limited, special order basis.

TYPICAL APPLICATIONS:

- Aeration & Pollution Control
- Cooling Ponds
- Scrubbing and Washing Gases and Fumes
- Cooling Coil
- Dust Proofing
- Chemical Processes



At 0.07 bar: Wide spray angle with large droplets and minimal misting.

Model Number	Thread BSPT	MAX. FREE PASSAGE (mm)	CAPACITY (L/min) AT VARIOUS PRESSURES (bar)												Spray Angle @		
			0.1 bar	0.2 bar	0.3 bar	0.5 bar	0.7 bar	1 bar	1.5 bar	2 bar	3 bar	4 bar	5 bar	7 bar	0.5 bar	1.5 bar	4 bar
1R10	1"	12.7	14.4	20.4	25.0	32.0	38.0	46.0	56.0	64.0	79.0	91.0	102	121	65°	72°	73°
1R12	1"	12.7	17.3	24.5	30.0	39.0	46.0	55.0	67.0	77.0	95.0	109	122	145	71°	74°	75°
1R14	1"	12.7	20.2	28.5	35.0	45.0	53.0	64.0	78.0	90.0	111	128	143	169	74°	79°	80°
1R16	1"	12.7	23.1	33.0	40.0	52.0	61.0	73.0	89.0	103	126	146	163	193	77°	83°	83°
1R18	1"	12.7	25.9	37.0	45.0	58.0	69.0	82.0	100	116	142	164	183	217	80°	86°	76°
1 ¹ / ₄ R12	1 1/4"	13.1	17.3	24.5	30.0	39.0	46.0	55.0	67.0	77.0	95.0	109	122	145	64°	68°	69°
1 ¹ / ₄ R14	1 1/4"	14.3	20.2	28.5	35.0	45.0	53.0	64.0	78.0	90.0	111	128	143	169	66°	71°	71°
1 ¹ / ₄ R16	1 1/4"	14.3	23.1	33.0	40.0	52.0	61.0	73.0	89.0	103	126	146	163	193	71°	75°	75°
1 ¹ / ₄ R18	1 1/4"	14.3	25.9	37.0	45.0	58.0	69.0	82.0	100	116	142	164	183	217	76°	78°	79°
1 ¹ / ₄ R21	1 1/4"	14.3	30.3	43.0	52.0	68.0	80.0	96.0	117	135	166	191	214	253	79°	82°	82°
1 ¹ / ₄ R24	1 1/4"	14.3	35.0	49.0	60.0	77.0	92.0	109	134	155	189	219	245	289	81°	76°	86°
1 ¹ / ₂ R18	1 1/2"	15.5	25.9	37.0	45.0	58.0	69.0	82	100	116	142	164	183	217	66°	70°	71°
1 ¹ / ₂ R21	1 1/2"	17.5	30.3	43.0	52.0	68.0	80.0	96	117	135	166	191	214	253	70°	74°	74°
1 ¹ / ₂ R24	1 1/2"	18.8	35.0	49.0	60.0	77.0	92.0	109	134	155	189	219	245	289	73°	76°	76°
1 ¹ / ₂ R28	1 1/2"	18.8	40.0	57.0	70.0	90.0	107	128	156	180	221	255	285	338	76°	79°	80°
1 ¹ / ₂ R32	1 1/2"	18.8	46.0	65.0	80.0	103	122	146	179	206	253	292	326	386	79°	84°	84°
1 ¹ / ₂ R37	1 1/2"	18.8	53.0	75.0	92.0	119	141	169	207	238	292	337	377	446	84°	88°	88°
2R37	2"	21.6	53.0	75.0	92.0	119	141	169	207	238	292	337	377	446	62°	64°	65°
2R43	2"	23.5	62.0	88.0	107	139	164	196	240	277	339	392	438	519	66°	70°	72°
2R49	2"	25.7	71.0	100	122	158	187	223	274	316	387	447	499	591	70°	72°	73°
2R57	2"	25.7	82.0	116	142	184	217	260	318	367	450	520	581	687	74°	77°	77°
2R65	2"	25.7	94.0	132	162	209	248	296	363	419	513	593	662	784	75°	79°	79°
2R75	2"	25.7	108	153	187	242	286	342	419	483	592	684	764	904	78°	81°	81°
2R86	2"	25.7	124	175	215	277	328	392	480	554	679	784	876	1037	86°	88°	88°
2 ¹ / ₂ R75	2 1/2"	33.3	108	153	187	242	286	342	419	483	592	684	764	904	67°	72°	72°
2 ¹ / ₂ R86	2 1/2"	33.3	124	175	215	277	328	392	480	554	679	784	876	1037	73°	76°	76°
2 ¹ / ₂ R100	2 1/2"	33.3	144	204	250	322	381	456	558	645	789	912	1019	1206	79°	83°	84°
2 ¹ / ₂ R115	2 1/2"	33.3	166	234	287	371	439	524	642	741	908	1048	1172	1387	80°	84°	85°
2 ¹ / ₂ R132	2 1/2"	33.3	190	269	330	425	503	602	737	851	1042	1203	1345	1592	82°	87°	87°