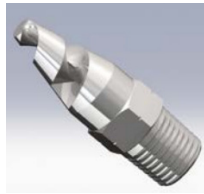
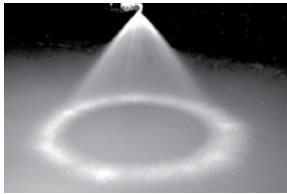


# Threaded Nozzles – Hollow Cone Series YH



## SPRAY CHARACTERISTICS:

A hollow cone spray pattern with large flow rates and small droplet sizes.

## CONSTRUCTION:

YH Series nozzles have an anti-clog design that can be easily inspected, cleaned and serviced. Standard materials are brass, 303 stainless steel, 316 stainless steel, PVC and Teflon®. Other materials available upon request.

## TYPICAL APPLICATIONS:

- Air & Gas Washing
- Dust Suppression
- Spray Ponds
- Cooling Tunnels
- Medical Treatment
- Humidification

Available Spray Angles	BEX Size	Thread BSPT	MAX. FREE PASSAGE (mm)	Dimension		CAPACITY (L/min) AT VARIOUS PRESSURES (bar)												
				"A" (mm)	"L" (mm)	0.3 bar	0.5 bar	0.7 bar	1 bar	1.5 bar	2 bar	3 bar	4 bar	6 bar	10 bar	13 bar	17 bar	20 bar
50°	07	1/4"	2.21	14 Hex	30.2	1.75	2.26	2.67	3.20	3.90	4.50	5.50	6.40	7.80	10.1	11.5	13.2	14.3
	13	1/4"	3.18	14 Hex	30.2	3.25	4.20	5.00	5.90	7.30	8.40	10.3	11.9	14.5	18.7	21.4	24.4	26.5
	20	1/4"	3.96	14 Hex	30.2	5.00	6.50	7.60	9.10	11.2	12.9	15.8	18.2	22.3	28.8	33.0	38.0	41.0
60°	30	3/8"	4.78	17 Hex	54	7.50	9.70	11.4	13.7	16.8	19.3	23.7	27.4	34.0	43.0	49.0	56.0	61.0
90°	40	3/8"	5.56	17 Hex	54	10.0	12.9	15.5	18.2	22.3	25.8	31.6	36.0	45.0	58.0	66.0	75.0	82.0
120°	53	3/8"	6.35	17 Hex	54	13.2	17.1	20.2	24.2	29.6	34.0	42.0	48.0	59.0	76.0	87.0	100	108
	82	3/8"	7.95	17 Hex	54	20.5	26.4	31.3	37.4	46.0	53.0	65.0	75.0	92	118	135	154	167
180°	120	1/2"	9.53	22 Hex	63.5	30.0	39.0	46.0	54.7	67.0	77.0	95.0	109	134	173	197	226	245
	164	1/2"	11.1	22 Hex	63.5	41.0	53.0	63.0	74.8	92.0	106	129	149	183	236	270	308	334
	210	3/4"	12.7	27 Hex	73	52.0	38.0	80.0	95.7	117	135	166	191	234	303	345	395	428
	340	1"	15.9	35 Hex	93.6	85.0	110	130	155	190	219	268	310	280	490	559	639	639
	470	1"	19.1	35 Hex	93.6	117	151	179	214	262	303	371	428	525	677	772	883	958