

Other Types of Nozzles and Accessories – Ruby Orifice Nozzles



TYPICAL APPLICATIONS:

These nozzles are engineered specifically for the pulp and paper industry. The nozzles are designed to give a laminar stream of liquid at higher pressures with much higher wear resistance than the equivalent nozzles made of stainless steel.

WT Series Spray Nozzles. These trim type of spray nozzles provide a consistent solid stream of water at various pressures up to 135 bar.

CONSTRUCTION:

The nozzles consist of a ruby insert pressed into a 317SS housing.

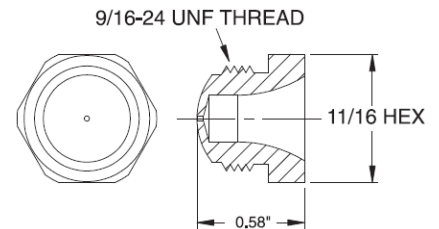
Model Number	MAX. FREE PASSAGE (mm)	CAPACITY (L/min) AT VARIOUS PRESSURES (bar)									
		6 bar	12 bar	20 bar	25 bar	35 bar	40 bar	55 bar	70 bar	100 bar	135 bar
WT32	0.81	0.74	1.02	1.34	1.48	1.75	1.86	2.19	2.48	2.98	3.45
WT35	0.89	0.88	1.27	1.64	1.84	2.17	2.31	2.72	3.05	3.65	4.23
WT40	1.02	1.17	1.66	2.16	2.38	2.82	3.02	3.55	4.00	4.80	5.54
WT45	1.14	1.41	1.98	2.53	2.85	3.36	3.61	4.23	4.77	5.70	6.63



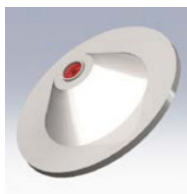
WN Series Spray Nozzles.

These trim type of spray nozzles provide a consistent solid stream of water at various pressures up to 55 bar. They are available in both the BEX WF disc style and the BEX WN threaded style.

Standard body material is 316SS.



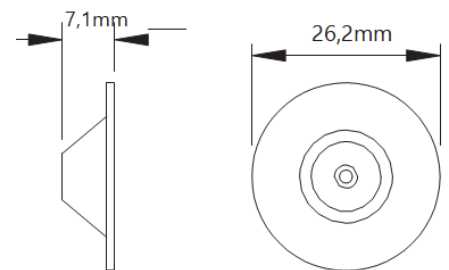
Model Number	MAX. FREE PASSAGE (mm)	CAPACITY (L/min) AT VARIOUS PRESSURES (bar)								
		1.5 bar	3 bar	4 bar	5 bar	7 bar	15 bar	20 bar	40 bar	60 bar
WN32	0.81	0.4	0.5	0.6	0.7	0.8	1.1	1.3	1.9	2.3
WN35	0.89	0.4	0.6	0.7	0.8	1.0	1.4	1.6	2.3	2.8
WN40	1.02	0.6	0.8	1.0	1.1	1.3	1.8	2.2	3.0	3.7
WN45	1.14	0.7	1.0	1.2	1.3	1.5	2.2	2.5	3.6	4.4



WF Series Spray Nozzles.

These trim type of spray nozzles provide a consistent solid stream of water at various pressures up to 55 bar. They are available in both the BEX WF disc style and the BEX WN threaded style.

Standard body material is 317SS.



Model Number	MAX. FREE PASSAGE (mm)	CAPACITY (L/min) AT VARIOUS PRESSURES (bar)								
		1.5 bar	3 bar	4 bar	5 bar	7 bar	15 bar	20 bar	40 bar	60 bar
WF32	0.81	0.4	0.5	0.6	0.7	0.8	1.1	1.3	1.9	2.3
WF35	0.89	0.4	0.6	0.7	0.8	1.0	1.4	1.6	2.3	2.8
WF40	1.02	0.6	0.8	1.0	1.1	1.3	1.8	2.2	3.0	3.7
WF45	1.14	0.7	1.0	1.2	1.3	1.5	2.2	2.5	3.6	4.4