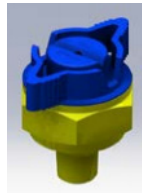
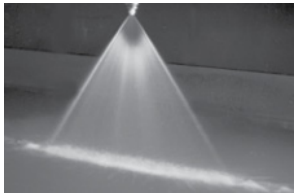
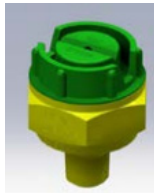


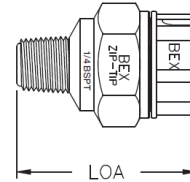
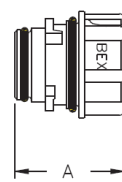
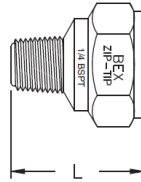
# Quick Disconnect – BEX ZipTip® Nozzles – Injection Molded



with Tabz



w/oTabz

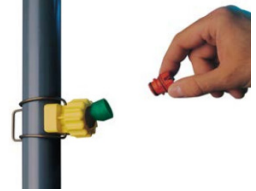


## CHARACTERISTICS:

BEX Molded Plastic Zip-Tip® Spray Nozzles are designed to allow fast and easy installation and removal of spray nozzle tips and adapters, while providing positive alignment of spray pattern. Double VITON® O-Ring seals are supplied standard with each nozzle tip. Seals are located on, and removed with, the nozzle tip for easy flushing. A variety of models and spray patterns are available.

## CONSTRUCTION:

Molded plastic spray nozzles are available in glass reinforced polypropylene or PVDF (Kynar®). Other materials are available upon request. All models are available in either BSPT or NPT threads. (NOTE: Metal and molded plastic ZIP-TIP® components are not interchangeable.)



## TYPICAL APPLICATIONS:

- Spray Washing & Rinsing
- Parts Cleaning
- Pretreatment

Type	Length L (mm)	Dim.A (mm)	Dim.LOA (mm)
ZF	31	25	43
ZS	31	25	43
ZSW	31	25	43
ZTA	31	25	43
ZPLUG	31	32	43

## ZIP-TIP BODIES AND ADAPTERS



**ZBD**  
1/8" - 1/2" BSPT Male only  
Glass reinforced polypropylene or PVDF



**KZBD**  
To be used with K-Ball® Clip-On Nozzle Assemblies. Glass reinforced polypropylene or PVDF.



**ZTA**  
1/8" - 3/8" BSPT Female only  
Glass reinforced polypropylene or PVDF



**ZPLUG**  
To shut off individual nozzles  
Glass reinforced polypropylene or PVDF

## HOW TO ORDER BEX ZIP-TIPS

### COMPLETE ASEMBLIES:

Indicate ZBD connection size (1/8", 1/4", 3/8" or 1/2") followed by model number (ZF, ZS, ZSW or ZSQ) found on pages 55-57. Then indicate material of construction (Glass reinforced polypropylene, Red PVDF or Natural PVDF).

### REPLACEMENT TIPS ONLY

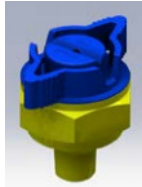
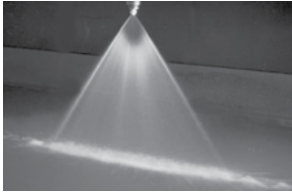
Indicate the tip model number (ZF, ZS, ZSW or ZSQ) found on pages 55-57. Then indicate material of construction (Glass reinforced polypropylene, Red PVDF or Natural PVDF).



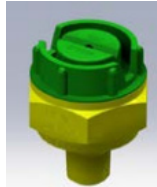
### Zip-Tip® with Tabz™

Finger Tabz for easier insertion and removal.  
Available on all models.

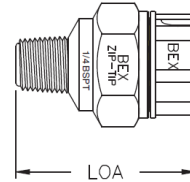
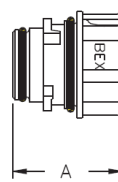
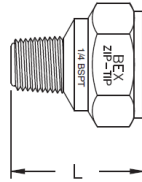
# Quick Disconnect – BEX ZipTip® Nozzles – Series ZF



with Tabz



w/o Tabz



## SPRAY CHARACTERISTICS:

ZF-Series spray nozzles produce a flat, fan-shaped spray pattern with spray angles available from 15° to 110° measured at 3 bar. Spray angles generally increase with pressure, as shown in the capacity table. Spray density tapers off toward the outside of these sprays, to permit overlapping of spray patterns while maintaining uniform spray density.

## CONSTRUCTION:

Molded plastic spray nozzles are available in glass reinforced polypropylene or PVDF (Kynar®).

## COLOR CODING:

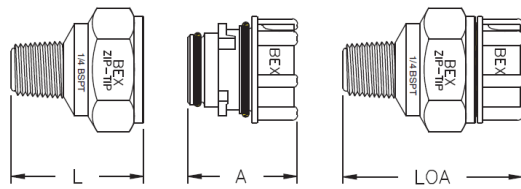
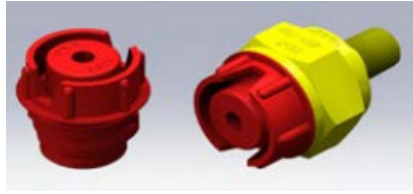
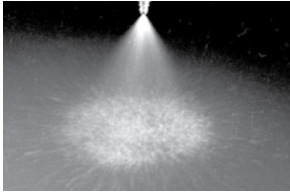
Zip-Tip flat “V” spray tips are color-coded for easy identification.

## TYPICAL APPLICATIONS:

- Parts Cleaning
- Metal Washing
- Foam Control
- Asphalt Spraying
- Gravel Washing
- Vehicle Washing
- Fertilizer Spraying
- Dishwashers

available Spray Angles	BEX ZF-Size	color	MAX. FREE PASSAGE (mm)	CAPACITY (L/min) AT VARIOUS PRESSURES (bar)													
				0.3 bar	0.5 bar	0.7 bar	1 bar	1.5 bar	2 bar	3 bar	4 bar	5 bar	7 bar	10 bar	20 bar	30 bar	
110°	015	lime green	0.76	0.12	0.16	0.19	0.23	0.28	0.3	0.39	0.5	0.6	0.6	0.71	1.01	1.24	
	02	lime green	0.91	0.25	0.32	0.38	0.46	0.56	0.64	0.79	0.91	1.00	1.20	1.40	2.00	2.45	
	03	lime green	1.10	0.37	0.48	0.57	0.68	0.84	0.97	1.18	1.37	1.53	1.81	2.16	3.06	3.74	
	04	lime green	1.20	0.50	0.64	0.76	0.91	1.12	1.29	1.58	1.82	2.04	2.41	2.88	4.08	4.99	
	95°	05	lime green	1.35	0.62	0.81	0.95	1.10	1.40	1.61	1.97	2.28	2.55	3.01	3.60	5.10	6.20
	80°	06	lime green	1.47	0.75	0.97	1.14	1.40	1.67	1.93	2.37	2.73	3.06	3.60	4.30	6.10	7.50
	65°	08	lime green	1.70	1.00	1.29	1.53	1.80	2.23	2.58	3.20	3.60	4.10	4.80	5.80	8.20	10.0
	50°	10	white	1.91	1.25	1.61	1.91	2.30	2.79	3.20	3.90	4.60	5.10	6.0	7.20	10.2	12.5
	40°	12	orange	2.08	1.50	1.93	2.29	2.73	3.30	3.90	4.70	5.50	6.10	7.20	8.60	12.2	15.0
	25°	15	grey	2.31	1.87	2.42	2.86	3.40	4.20	4.80	5.90	6.80	7.60	9.00	10.8	15.3	18.7
15°	20	light blue	2.67	2.50	3.20	3.80	4.60	5.60	6.40	7.90	9.10	10.2	12.1	14.4	20.4	25.0	
	30	purple	3.28	3.70	4.80	5.70	6.80	8.40	9.70	11.8	13.7	15.3	18.1	21.6	30.6	37.4	
	40	green	3.78	5.00	6.40	7.60	9.10	11.2	12.9	15.8	18.2	20.4	24.1	28.8	41.0	50.0	
	50	yellow	4.24	6.20	8.10	9.50	11.4	14.0	16.1	19.7	22.8	25.5	30.1	36.0	51.0	62.0	
	60	blue	4.62	7.50	9.70	11.4	13.7	16.7	19.3	23.7	27.3	30.6	36.0	43.0	61.0	75.0	
	70	red	5.00	8.70	11.3	13.3	16.0	19.5	22.6	27.6	32.0	36.0	42.0	50.0	71.0	87.0	

# Quick Disconnect – BEX ZipTip® Nozzles – Series ZS



## SPRAY CHARACTERISTICS:

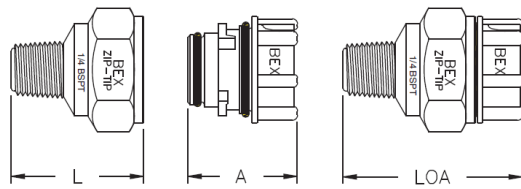
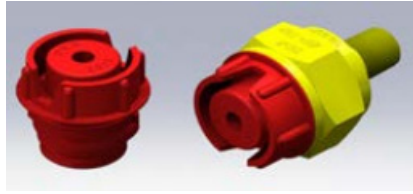
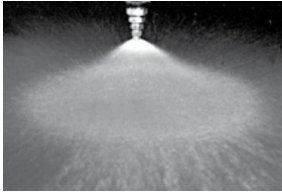
A full-cone spray with uniform spray distribution.  
Removable patented vane is standard.

## CONSTRUCTION:

Molded plastic spray nozzles are available in glass reinforced polypropylene or PVDF (Kynar®).

Model Number	MAX. FREE PASSAGE (mm)	CAPACITY (L/min) AT VARIOUS PRESSURES (bar)												Spray Angle @		
		0.2 bar	0.3 bar	0.5 bar	0.7 bar	1 bar	1.5 bar	2 bar	3 bar	4 bar	5 bar	6 bar	8 bar	0.5 bar	1.5 bar	5 bar
ZS1	0.84	--	--	--	--	0.46	0.56	0.64	0.79	0.91	1.02	1.12	1.29	--	55°	52°
ZS1.5	1.17	--	--	--	0.57	0.68	0.84	0.97	1.18	1.37	1.53	1.67	1.93	--	65°	57°
ZS2	1.30	--	--	0.64	0.76	0.91	1.12	1.29	1.58	1.82	2.04	2.23	2.58	54°	59°	60°
ZS3	1.30	--	0.75	0.97	1.14	1.37	1.67	1.93	2.37	2.73	3.06	3.30	3.90	50°	53°	60°
ZS3.5	1.30	0.71	0.87	1.13	1.33	1.60	1.95	2.26	2.76	3.20	3.60	3.90	4.50	48°	58°	61°
ZS5	1.63	1.02	1.25	1.61	1.91	2.28	2.79	3.20	3.90	4.60	5.10	5.60	6.40	60°	75°	70°
ZS6	1.63	1.22	1.50	1.93	2.29	2.73	3.30	3.90	4.70	5.50	6.10	6.70	7.70	67°	75°	70°
ZS6.5	2.31	1.32	1.62	2.09	2.48	2.96	3.60	4.20	5.10	5.90	6.60	7.30	8.40	48°	56°	50°
ZS7.5	2.31	1.53	1.87	2.42	2.86	3.40	4.20	4.80	5.90	6.80	7.60	8.40	9.70	55°	65°	48°
ZS8.5	2.31	1.73	2.12	2.74	3.20	3.90	4.70	5.50	6.70	7.70	8.70	9.50	11.0	58°	65°	63°
ZS10	2.31	2.04	2.50	3.20	3.80	4.60	5.60	6.40	7.90	9.10	10.2	11.2	12.9	60°	65°	62°
ZS14	2.31	2.85	3.50	4.51	5.30	6.40	7.80	9.00	11.1	12.8	14.3	15.6	18.0	78°	85°	75°
ZS14	2.59	2.85	3.50	4.80	5.30	6.80	8.40	9.70	11.8	13.7	15.3	16.7	19.3	63°	65°	60°
ZS18	2.59	3.70	4.50	5.80	6.90	8.20	10.0	11.6	14.2	16.4	18.3	20.1	23.2	85°	88°	76°
ZS20	2.59	4.10	5.00	6.40	7.60	9.10	11.2	12.9	15.8	18.2	20.4	22.3	25.8	76°	82°	75°
ZS22	2.90	4.50	5.50	7.01	8.40	10.0	12.3	14.2	17.4	20.1	22.4	24.6	28.4	76°	78°	76°

# Quick Disconnect – BEX ZipTip® Nozzles – Series ZSW & ZSQ



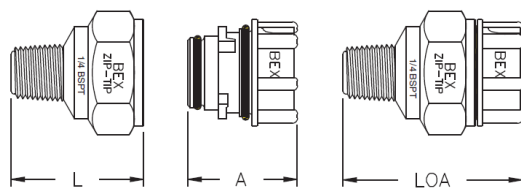
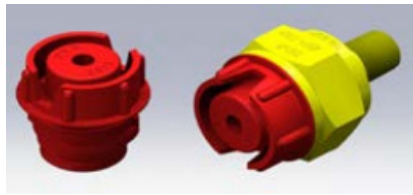
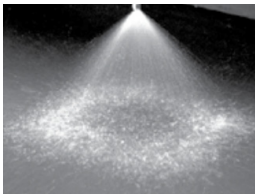
## SPRAY CHARACTERISTICS:

A wide full-cone spray with uniform spray distribution. Removable patented vane is standard.

## CONSTRUCTION:

Molded plastic spray nozzles are available in glass reinforced polypropylene or PVDF (Kynar®).

Model Number	MAX. FREE PASSAGE (mm)	CAPACITY (L/min) AT VARIOUS PRESSURES (bar)											Spray Angle @		
		0.3 bar	0.5 bar	0.7 bar	1 bar	1.5 bar	2 bar	3 bar	4 bar	5 bar	6 bar	8 bar	0.5 bar	1.5 bar	5 bar
ZS2.8W	1.30	--	0.90	1.07	1.28	1.56	1.80	2.21	2.55	2.85	3.13	3.60	110°	105°	96°
ZS4.3W	1.30	--	1.39	1.64	1.96	2.40	2.77	3.40	3.90	4.40	4.80	5.50	117°	108°	100°
ZS5.6W	1.63	--	1.80	2.14	2.55	3.13	3.60	4.40	5.10	5.70	6.30	7.20	117°	110°	100°
ZS8W	2.06	2.00	2.58	3.05	3.60	4.50	5.20	6.30	7.30	8.20	8.90	10.3	118°	110°	103°
ZS10W	2.31	2.50	3.20	3.80	4.60	5.60	6.40	7.90	9.10	10.2	11.2	12.9	118°	108°	102°
ZS12W	2.31	3.00	3.90	4.60	5.50	6.70	7.70	9.50	10.9	12.2	13.4	15.5	120°	112°	102°
ZS14W	2.31	3.50	4.50	5.30	6.40	7.80	9.00	11.1	12.8	14.3	15.6	18.0	118°	114°	104°
ZS17W	2.59	4.20	5.50	6.50	7.70	9.50	11.0	13.4	15.5	17.3	19.0	21.9	118°	117°	102°
ZS20W	2.59	5.00	6.40	7.60	9.10	11.2	12.9	15.8	18.2	20.4	22.3	25.8	120°	120°	106°
ZS24W	2.59	6.00	7.70	9.20	10.9	13.4	15.5	18.9	21.9	24.5	26.8	30.9	122°	118°	106°



## SPRAY CHARACTERISTICS:

A full-square spray with uniform spray distribution. Removable patented vane is standard.

## CONSTRUCTION:

Molded plastic spray nozzles are available in glass reinforced polypropylene or PVDF (Kynar®).

Model Number	MAX. FREE PASSAGE (mm)	CAPACITY (L/min) AT VARIOUS PRESSURES (bar)											Spray Angle @		
		0.3 bar	0.5 bar	0.7 bar	1 bar	1.5 bar	2 bar	3 bar	4 bar	5 bar	6 bar	8 bar	0.5 bar	1.5 bar	5 bar
ZS3.6SQ	1.45	--	1.16	1.37	1.64	2.01	2.32	2.84	3.30	3.70	4.00	4.60	42°	55°	50°
ZS4.8SQ	1.63	--	1.55	1.83	2.19	2.68	3.09	3.8	4.40	4.90	5.40	6.20	50°	65°	60°
ZS6SQ	2.06	--	1.93	2.29	2.73	3.30	3.90	4.70	5.50	6.10	6.70	7.70	30°	65°	60°
ZS10SQ	2.31	2.50	3.20	3.80	4.60	5.60	6.40	7.90	9.10	10.2	11.2	12.9	61°	67°	60°
ZS12SQ	2.31	3.00	3.90	4.60	5.50	6.70	7.70	9.50	10.9	12.2	13.4	15.5	71°	76°	69°
ZS14SQ	2.31	3.50	4.50	5.30	6.40	7.80	9.00	11.1	12.8	14.3	15.6	18.0	78°	85°	75°
ZS18SQ	2.59	4.50	5.80	6.90	8.20	10.0	11.6	14.2	16.4	18.3	20.1	23.2	85°	88°	76°