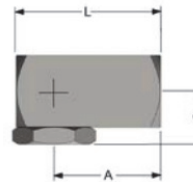
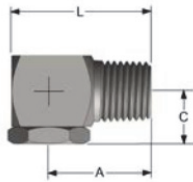
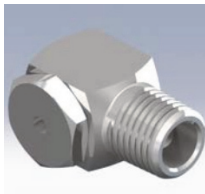
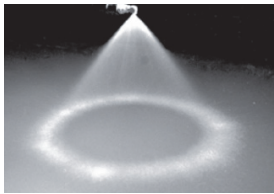


Gewindedüsen – Hohlkegeldüse Serie H



Modell AG	Abm.	Abm.	Abm.	Modell IG	Abm.	Abm.	Abm.
	A	L	C		A	L	C
	(mm)	(mm)	(mm)		(mm)	(mm)	(mm)
1/8H	18	25	10	1/8FH	18	25	10
1/4H	24	25	13	1/4FH	24	25	13
3/8H	25	35	14	3/8FH	25	35	14
1/2H	35	48	19	1/2FH	35	48	19
3/4H	40	57	22	3/4FH	40	57	22

SPRÜHMERKMALE:

Ein Hohlkegelstrahl, dessen Seitenränder im rechten Winkel zur Mittelachse der Rohrverbindung verlaufen. Der vorgesehene Standardwinkel des Sprühstrahls beträgt 70° bei 0,7 bar.

AUSFÜHRUNG:

Standardmaterialien sind Messing, Edelstahl 303 und 316. Weitere Modelle sind mit anderen Materialien erhältlich.

TYPISCHE ANWENDUNGEN:

- Luft- und Gaswäsche
- Industrierwäscher
- Kühltunnel
- Entfettung

Modell		Ge- winde BSPT	Max. freier Durch- lass (mm)	Durchfluss (l/min) bei verschiedenen Drücken (bar)											Sprühwinkel @			
Innengewinde	Außengewinde			0.2 bar	0.3 bar	0.5 bar	0.7 bar	1 bar	1.5 bar	2 bar	3 bar	4 bar	6 bar	8 bar	0.7 bar	1.5 bar	3 bar	6 bar
1/8FH0.5	1/8H0.5	1/8"	0.71	--	--	--	--	--	--	0.32	0.39	0.46	0.56	0.64	--	--	40°	45°
1/8FH1	1/8H1	1/8"	1.35	--	--	--	--	0.46	0.56	0.64	0.79	0.91	1.12	1.29	--	60°	74°	75°
1/8FH2	1/8H2	1/8"	2.18	--	--	--	--	0.91	1.12	1.29	1.58	1.82	2.23	2.58	--	65°	72°	76°
1/8FH3	1/8H3	1/8"	2.49	--	--	0.97	1.14	1.37	1.67	1.93	2.37	2.73	3.3	3.9	65°	76°	80°	83°
1/8FH5	1/8H5	1/8"	3.25	--	1.25	1.61	1.91	2.28	2.79	3.2	3.9	4.6	5.6	6.4	70°	77°	80°	81°
1/8FH7.5	1/8H7.5	1/8"	3.89	1.53	1.87	2.42	2.86	3.4	4.2	4.8	5.9	6.8	8.4	9.7	70°	86°	94°	94°
1/8FH10	1/8H10	1/8"	4.34	2.04	2.5	3.2	3.8	4.6	5.6	6.4	7.9	9.1	11.2	12.9	70°	71°	73°	75°
1/4FH1	1/4H1	1/4"	1.52	--	--	0.32	0.38	0.46	0.56	0.64	0.79	0.91	1.12	1.29	--	61°	74°	69°
1/4FH2	1/4H2	1/4"	2.16	--	--	--	0.76	0.91	1.12	1.29	1.58	1.82	2.23	2.58	70°	75°	83°	85°
1/4FH3	1/4H3	1/4"	2.82	--	--	0.97	1.14	1.37	1.67	1.93	2.37	2.73	3.3	3.9	70°	70°	72°	74°
1/4FH5	1/4H5	1/4"	3.45	--	1.25	1.61	1.91	2.28	2.79	3.2	3.9	4.6	5.6	6.4	70°	77°	80°	83°
1/4FH7.5	1/4H7.5	1/4"	4.22	1.53	1.87	2.42	2.86	3.4	4.2	4.8	5.9	6.8	8.4	9.7	70°	70°	74°	75°
1/4FH10	1/4H10	1/4"	4.32	2.04	2.5	3.2	3.8	4.6	5.6	6.4	7.9	9.1	11.2	12.9	70°	74°	76°	80°
1/4FH12.5	1/4H12.5	1/4"	4.5	2.55	3.12	4	4.8	5.7	7	8.1	9.9	11.4	14	16.1	70°	82°	83°	83°
1/4FH15	1/4H15	1/4"	5.41	3.06	3.7	4.8	5.7	6.8	8.4	9.7	11.8	13.7	16.7	19.3	70°	73°	75°	75°
3/8FH5	3/8H5	3/8"	3.45	--	1.25	1.61	1.91	2.28	2.79	3.2	3.9	4.6	5.6	6.4	70°	74°	76°	76°
3/8FH7.5	3/8H7.5	3/8"	4.17	1.53	1.87	2.42	2.86	3.4	4.2	4.8	5.9	6.8	8.4	9.7	70°	74°	78°	82°
3/8FH10	3/8H10	3/8"	4.93	2.04	2.5	3.2	3.8	4.6	5.6	6.4	7.9	9.1	11.2	12.9	70°	78°	80°	81°
3/8FH12.5	3/8H12.5	3/8"	5.21	2.55	3.12	4	4.8	5.7	7	8.1	9.9	11.4	14	16.1	70°	80°	82°	84°
3/8FH15	3/8H15	3/8"	5.89	3.06	3.7	4.8	5.7	6.8	8.4	9.7	11.8	13.7	16.7	19.3	70°	73°	75°	75°
3/8FH20	3/8H20	3/8"	6.35	4.1	5	6.4	7.6	9.1	11.2	12.9	15.8	18.2	22.3	25.8	70°	73°	75°	75°
3/8FH25	3/8H25	3/8"	7.09	5.1	6.2	8.1	9.5	11.4	14	16.1	19.7	22.8	27.9	32	70°	72°	73°	73°
3/8FH30	3/8H30	3/8"	7.42	6.1	7.5	9.7	11.4	13.7	16.7	19.3	23.7	27.3	33	39	70°	70°	73°	72°
1/2FH25	1/2H25	1/2"	7.49	5.1	6.2	8.1	9.5	11.4	14	16.1	19.7	22.8	27.9	32	70°	75°	76°	76°
1/2FH30	1/2H30	1/2"	8.36	6.1	7.5	9.7	11.4	13.4	16.7	19.3	23.7	27.3	33	39	70°	78°	80°	81°
1/2FH40	1/2H40	1/2"	9.37	8.2	10	12.9	15.3	18.2	22.3	25.8	32	36	45	52	70°	75°	75°	75°
1/2FH50	1/2H50	1/2"	9.98	10.2	12.5	16.1	19.1	22.8	27.9	32	39	46	56	64	70°	70°	71°	73°
1/2FH60	1/2H60	1/2"	10.69	12.2	15	19.3	22.9	27.3	33	39	47	55	67	77	70°	70°	71°	71°
3/4FH40	3/4H40	3/4"	9.35	8.2	10	12.9	15.3	18.2	22.3	25.8	32	36	45	52	70°	71°	76°	79°
3/4FH50	3/4H50	3/4"	10.69	10.2	12.5	16.1	19.1	22.8	27.9	32	39	46	56	64	70°	73°	74°	74°
3/4FH60	3/4H60	3/4"	11.13	12.2	15	19.3	22.9	27.3	33	39	47	55	67	77	70°	75°	78°	80°
3/4FH70	3/4H70	3/4"	11.91	14.3	17.5	22.6	26.7	32	39	45	55	64	78	90	70°	74°	76°	76°
3/4FH80	3/4H80	3/4"	12.29	16.3	20	25.8	30.5	36	45	52	63	73	89	103	70°	73°	75°	76°
3/4FH90	3/4H90	3/4"	12.7	18.3	22.5	29	34	41	50	58	71	82	100	116	70°	70°	71°	73°
3/4FH100	3/4H100	3/4"	12.88	20.4	25	32	38	46	56	64	79	91	112	129	70°	73°	76°	78°
3/4FH110	3/4H110	3/4"	14.61	22.4	27.5	35	42	50	61	71	87	100	123	142	70°	72°	75°	72°
3/4FH120	3/4H120	3/4"	14.43	24.5	30	39	46	55	67	77	95	109	134	155	70°	70°	71°	71°